

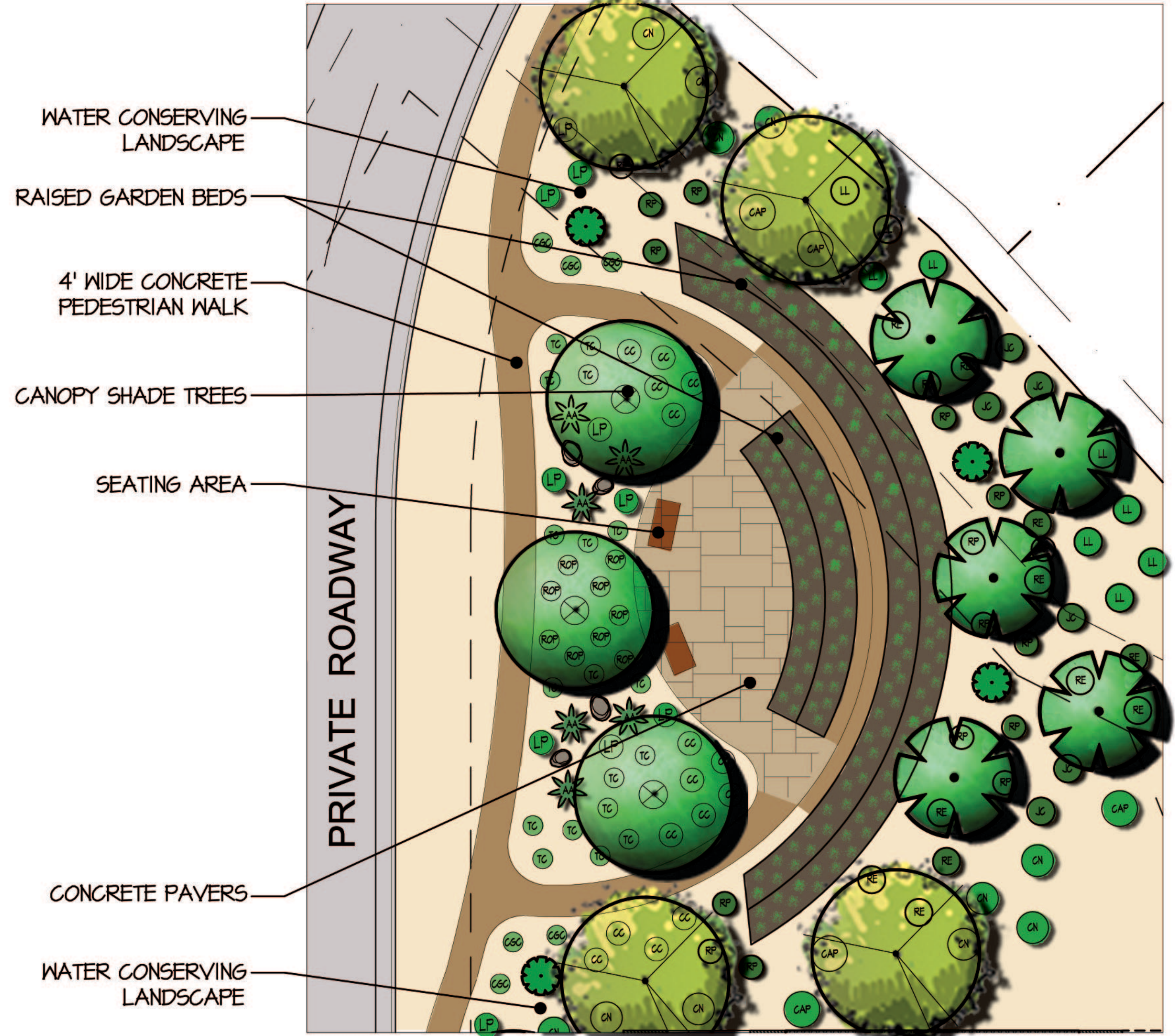
**ELEVATION - PROJECT ENTRY**  
SCALE: N.T.S.

**TYPICAL PROJECT ENTRY**  
SCALE: 1" = 10'-0"

**PLANT PALETTE**

LARGE TREES			MEDIUM SHRUBS			LARGE ACCENTS		
SYM. NAME	SIZE	WATER USAGE	SYM. NAME	SIZE	WATER USAGE	SYM. NAME	SIZE	WATER USAGE
Acacia aneura Muga Tipu Tree	24" Box	L 2	Bougainvillea 'Oh La La' Oh La La Bougainvillea	5 gal.	M 5	Agave americana Century Plant	15 gal.	L 2
Acacia salicina Willow Acacia	24" Box	M 5	Eremophila maculata 'Valentine' Red Elm Bush	5 gal.	L 2	Beaucarnea recurvata Pony Tail Palm	24" box	L 2
Acacia stenophylla Shoestring Acacia	24" Box	L 2	Ixora coccinea Jungle Flame	5 gal.	M 5	Fouquieria splendens Ocotillo	6-8 Canes	L 2
Parkinsonia praecox Sonoran Palo Verde	36" Box Low Branch	L 2	Justicia californica Chuparosa	5 gal.	L 2	Pachycereus marginatus Mexican Organ Pipe	15 gal.	L 2
Parkinsonia 'Desert Museum' Desert Museum Palo Verde	36" Box Low Branch	L 2	Leucophyllum laevigatum Chihachuan Sage	5 gal.	L 2	Pachypodium lamerei Madagascar Palm	15 gal.	L 2
Prosopis glandulosa Honey Mesquite	36" Box Low Branch	L 2	Leucophyllum longiantha 'Rio Bravo' Texas Ranger	5 gal.	L 2			
			Leucophyllum prunosum 'Sierra Bouquet' Sierra Bouquet Teaxas Ranger	5 gal.	L 2	MEDIUM ACCENTS		
			Palafoxia n. 'Lavender Spice' Lavender Spice	5 gal.	L 2	SYM. NAME	SIZE	WATER USAGE
			Ruellia peruviana Desert Ruellia	5 gal.	M 5	Agave Desmettiana Agave	15 gal.	L 2
			Ruellia aquilegifolia Coral Fountain	5 gal.	M 5	Agave desmettiana 'Variegata' Variegated Agave	15 gal.	L 2
			Salvia leucantha Mexican Bush Sage	5 gal.	M 5	Diospyron wheeleri Desert Spoon	5 gal.	L 2
			Sphaeralcea ambigua 'Louis Hamilton' Louis Hamilton Globeamallard	5 gal.	L 2	Ferocactus acanthodes Compass Barrel Cactus	5 gal.	L 2
			SMALL SHRUBS			Yucca recurvifolia Pendulous Yucca	15 gal.	L 2
			SYM. NAME	SIZE	WATER USAGE	SMALL ACCENTS		
			Baileya multiradiata Desert Marigold	1 gal.	L 2	SYM. NAME	SIZE	WATER USAGE
			Carissa macrocarpa 'Green Carpet' Green Carpet Natal Plum	1 gal.	M 5	Agave geminiflora Twin Flowering Agave	5 gal.	L 2
			Convolvulus cneorum Bush Morning glory	1 gal.	L 2	Agave parryi Parry's Agave	5 gal.	L 2
			Eremophila glabra Emu Bush	1 gal.	L 2	Aloe x 'Blue Elf' Blue Elf Aloe	5 gal.	L 2
			Euphorbia biglandulosa Gopher Plant	5 gal.	L 2	Echinocactus grusonii Golden Barrel Cactus	5 gal.	L 2
			Euphorbia millii Crown of Thorns	5 gal.	L 2	Hesperaloe parviflora Red Yucca	5 gal.	L 2
			Gazania rigens leucocoma Trailing Gazania	1 gal.	M 5	ORNAMENTAL GRASSES		
			Hymenocys acacalis Angelita Daisy	1 gal.	L 2	SYM. NAME	SIZE	WATER USAGE
			Lantana x 'New Gold' New Gold Lantana	1 gal.	M 5	Muhlenbergia capillaris 'Regal Mist' Regal Mist Muhly	5 gal.	M 5
			Lantana montevidensis 'Trailing Purple' Purple Trailing Lantana	1 gal.	M 5	Nassella tenuissima Mexican Feather Grass	1 gal.	L 2
			Penstemon eatoni Firecracker Penstemon	5 gal.	M 5	TURF		
			Rosmarinus officinalis 'Prostratus' Dwarf Rosemary	1 gal.	M 5	SYM.	DESCRIPTION	
			Ruellia brittaniana 'Katie' Katie Ruellia	1 gal.	L 2			
			Tecoma stans 'Augustata' Arizona Yellow Bells	1 gal.	L 2			

**IRRIGATION SYSTEM:**  
THE IRRIGATION SYSTEM SHALL BE FULLY AUTOMATIC AND CONTROLLED BY A EVAPOTRANSPIRATION (ET) BASED CONTROLLER WITH A RAIN SENSING OVERRIDE DEVICE. ALL SHRUBS WILL IRRIGATED WITH WATER EFFICIENT DRIP EMITTERS.



**NEIGHBORHOOD GARDEN EXHIBIT**  
SCALE: 1" = 10'-0"



**PALM DESERT COUNTRY CLUB**  
77-200 CALIFORNIA DRIVE  
PALM DESERT, CA 92211  
Tract 33195  
APN'S 637-190-021, -024, -027

no.	revisions	date	by

Scale: SEE PLAN  
Date: 09/06/2017  
Drawn By: AV  
Approved By:

**PALM DESERT COUNTRY CLUB**  
**PRELIMINARY LANDSCAPE EXHIBITS**

North

Job No. 99-16-01

Sheet No. L-4

of