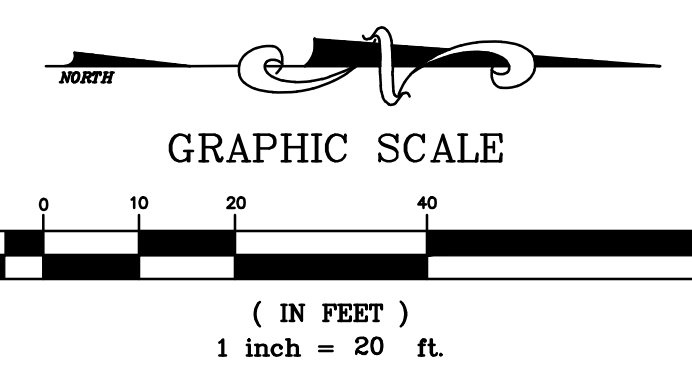


MATCHLINE SEE SHEET 3

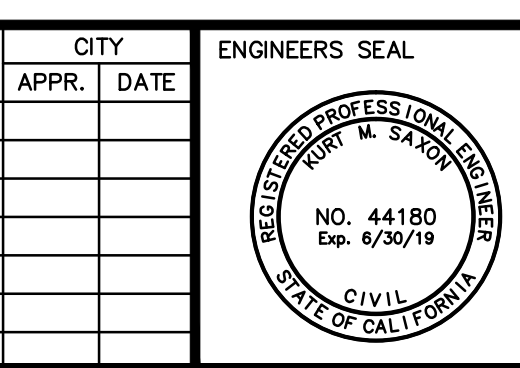
MATCHLINE SEE SHEET 4



BENCHMARK:
MONUMENT DESCRIPTION: 2" BRASS DISK
LOCATION: SOUTHWEST CORNER OF WASHINGTON STREET, AND HOLEY LANE EAST, 79 FEET SOUTH OF EOR, IN TOP OF CURB, FLUSH.
ELEVATION (MSL): NAVD88 120.607 + 50'

BASIS OF BEARINGS:
BEARINGS SHOWN HEREON ARE BASED UPON THE CENTERLINE OF TENNESSEE AVENUE SHOWN AS NORTH 00°08'57" EAST PER MAP OF TRACT NO. 2283 FILED IN BOOK 42 PAGES 82 THROUGH 89 INCLUSIVE OF MAPS, IN THE OFFICE OF THE COUNTY RECORDER OF RIVERSIDE COUNTY CALIFORNIA.

ENGINEER			REVISIONS			CITY	
MARK	BY	DATE				APPR.	DATE



PREPARED BY:
Saxon Engineering Services, Inc.
2885 TEMPLE HEIGHTS DRIVE, SUITE A, OCEANVIEW, CA 92066
TEL: 949.366.2180 FAX: 800.853.4193

PREPARED UNDER THE DIRECT SUPERVISION OF:
KURT M. SAXON RCE#44180

DATE: EXP. 06/30/19

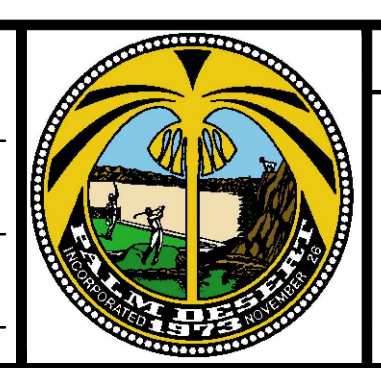
CITY OF PALM DESERT
DEPARTMENT OF PUBLIC WORKS

APPROVED BY:
BO CHEN, P.E.
CITY ENGINEER
R.C.E. 64819, EXP. 6/30/2015

DATE: DATE

REVIEWED AND RECOMMENDED BY: DATE

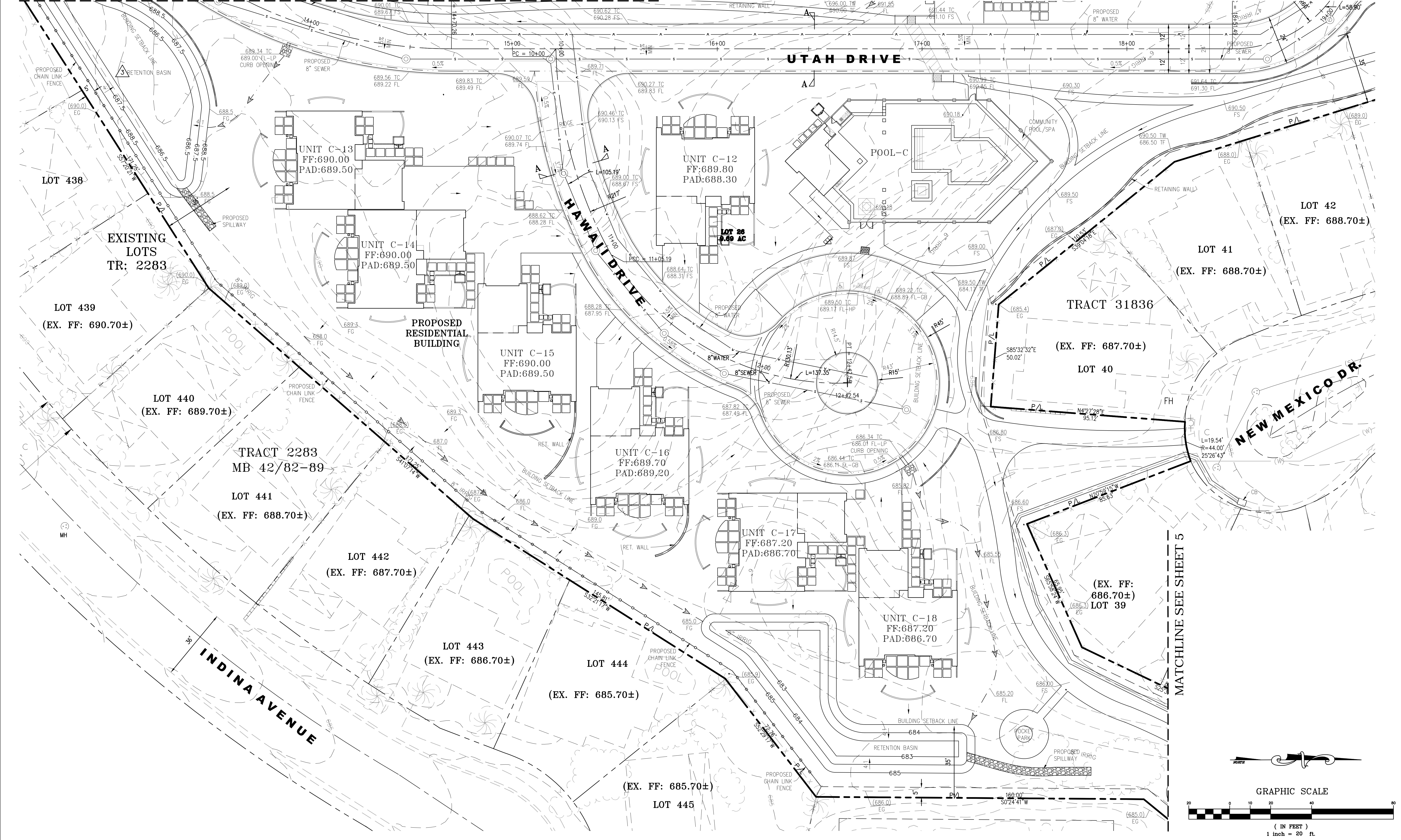
PLAN CHECKED BY:
CIVIL
TRAFFIC
LANDSCAPE



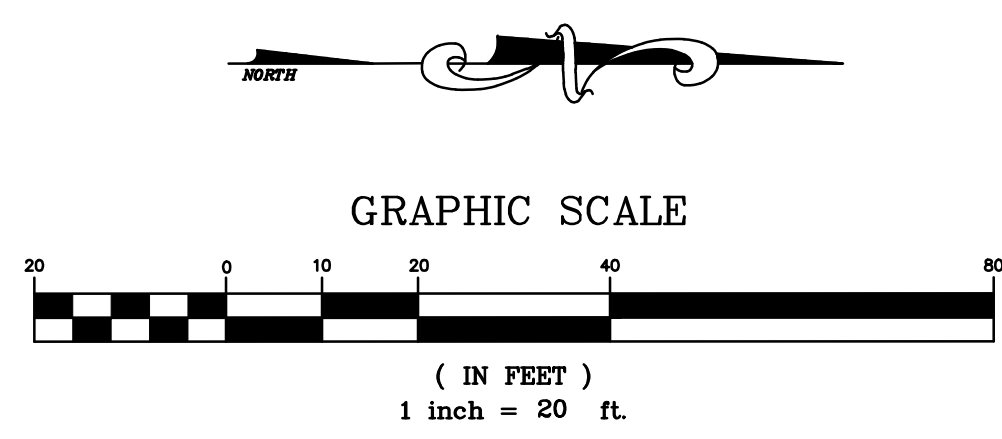
CITY OF PALM DESERT
TENTATIVE TRACT MAP
TRACT NO. 37242 - LOT 1
PALM DESERT COUNTRY CLUB
77-200 CALIFORNIA DRIVE
PALM DESERT, CA 92211

SHEET 2
OF
5 SHEETS
CITY FILE NUMBER

MATCHLINE SEE SHEET 2 & 3



MATCHLINE SEE SHEET 5



DIG ALERT
 DIAL BEFORE YOU DIG
 TWO WORKING DAYS BEFORE YOU DIG
 TOLL FREE 1-800-227-2600
 A PUBLIC SERVICE BY UNDERGROUND SERVICE ALERT

BENCHMARK:
 MONUMENT DESCRIPTION: 2" BRASS DISK
 LOCATION: SOUTHWEST CORNER OF WASHINGTON STREET, AND HOWLEY LANE EAST, 79 FEET SOUTH OF EOR, IN TOP OF CURB, FLUSH.
 ELEVATION (MSL): NAVD88 120.607' + 500'
BASIS OF BEARINGS:
 BEARINGS SHOWN HEREON ARE BASED UPON THE CENTERLINE OF TENNESSEE AVENUE SHOWN AS NORTH 00°08'57" EAST PER MAP OF TRACT NO. 2283 FILED IN BOOK 42 PAGES 82 THROUGH 89 INCLUSIVE OF MAPS, IN THE OFFICE OF THE COUNTY RECORDER OF RIVERSIDE COUNTY CALIFORNIA.

ENGINEER	MARK	BY	DATE	REVISIONS

CITY	APPR.	DATE

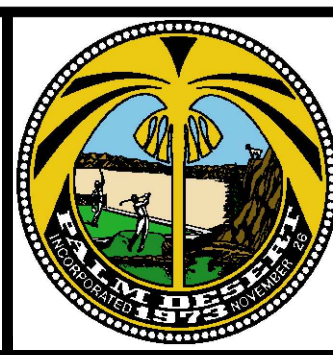
ENGINEERS SEAL
 PROFESSIONAL ENGINEER
 NO. 44180
 Exp. 6/30/19
 CIVIL
 STATE OF CALIFORNIA

PREPARED BY:
saxonengineering
 SAXON ENGINEERING SERVICES, INC.
 2685 TEMPLE HEIGHTS DRIVE, SUITE A, OCEANVIEW, CA 92066
 TEL: 949.366.2180 FAX: 800.853.4193
 PREPARED UNDER THE DIRECT SUPERVISION OF:
 KURT M. SAXON RCE#44180 DATE: EXP. 06/30/19

CITY OF PALM DESERT
 DEPARTMENT OF PUBLIC WORKS
 APPROVED BY:
 BO CHEN, P.E.
 CITY ENGINEER
 R.C.E. 64819, EXP. 6/30/2015
 REVIEWED AND RECOMMENDED BY: DATE

PLAN CHECKED BY:

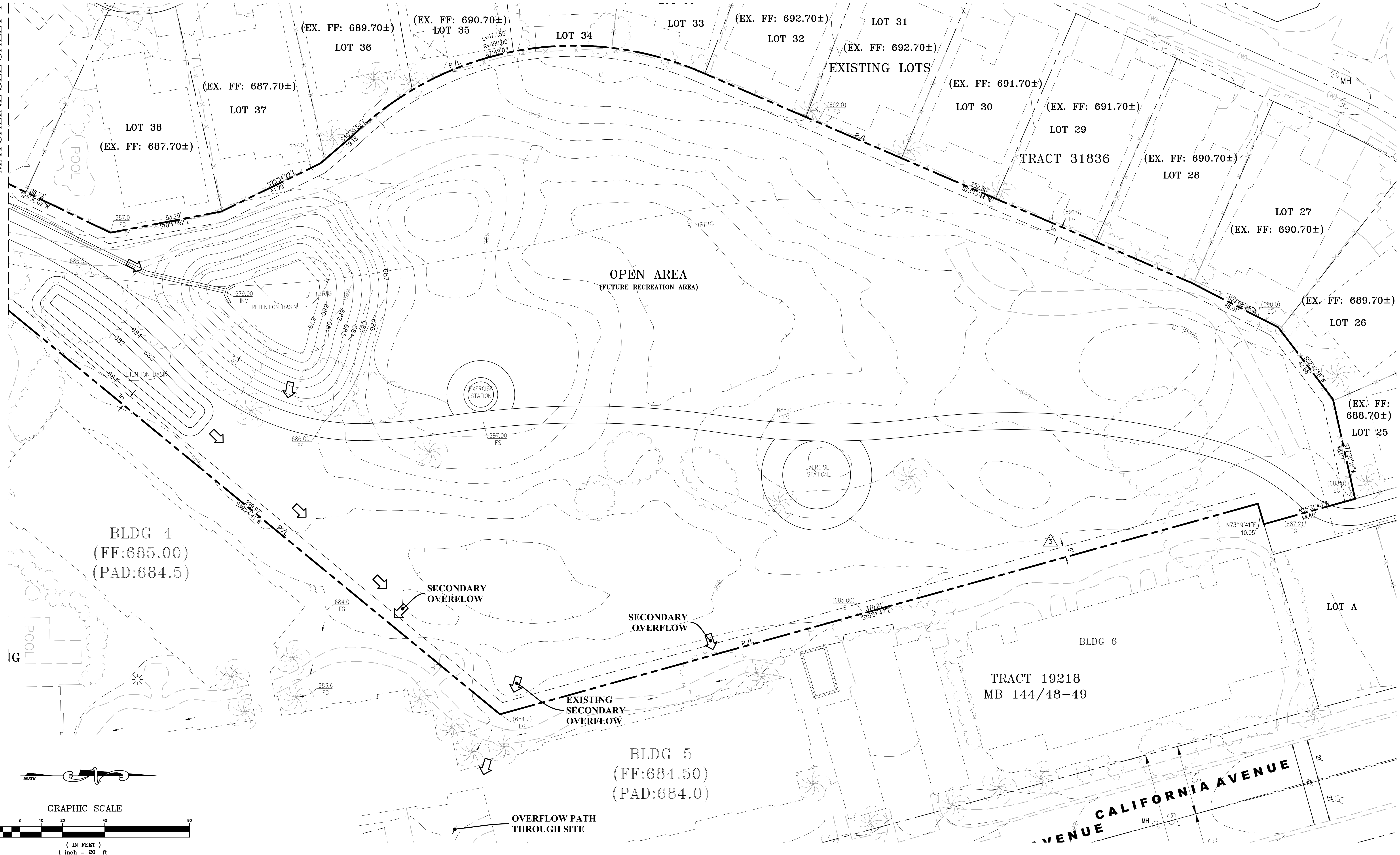
CIVIL	
TRAFFIC	
LANDSCAPE	



CITY OF PALM DESERT
 TENTATIVE TRACT MAP
 TRACT NO. 37242 - LOT 1
 PALM DESERT COUNTRY CLUB
 77-200 CALIFORNIA DRIVE
 PALM DESERT, CA 92211

SHEET 4 OF SHEETS 5
 CITY FILE NUMBER

MATCHLINE SEE SHEET 4



DIG ALERT
 DIAL BEFORE YOU DIG
 TWO WORKING DAYS BEFORE YOU DIG
 TOLL FREE 1-800-227-2600
 A PUBLIC SERVICE BY UNDERGROUND SERVICE ALERT

BENCHMARK:
 MONUMENT DESCRIPTION: 2" BRASS DISK
 LOCATION: SOUTHWEST CORNER OF WASHINGTON STREET, AND HOWLEY LANE EAST, 79 FEET SOUTH OF EOR, IN TOP OF CURB, FLUSH.
 ELEVATION (MSL): NAVD88 120.607 + 500'
BASIS OF BEARINGS:
 BEARINGS SHOWN HEREON ARE BASED UPON THE CENTERLINE OF TENNESSEE AVENUE SHOWN AS NORTH 00°08'57" EAST PER MAP OF TRACT NO. 2283 FILED IN BOOK 42 PAGES 82 THROUGH 89 INCLUSIVE OF MAPS, IN THE OFFICE OF THE COUNTY RECORDER OF RIVERSIDE COUNTY CALIFORNIA.

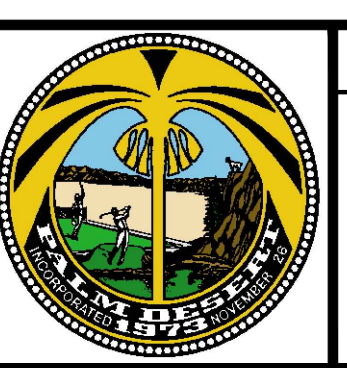
ENGINEER			REVISIONS			CITY	
MARK	BY	DATE				APPR.	DATE

ENGINEERS SEAL
 PROFESSIONAL ENGINEER
 NO. 44180
 Exp. 6/30/19
 CIVIL
 STATE OF CALIFORNIA

PREPARED BY:
saxon engineering
 SAXON ENGINEERING SERVICES, INC.
 2685 TEMPLE HEIGHTS DRIVE, SUITE A, OCEANSIDE, CA 92066
 TEL: 949.366.2180 FAX: 800.653.4193
PREPARED UNDER THE DIRECT SUPERVISION OF:
 KURT M. SAXON RCE#44180 DATE: EXP. 06/30/19

CITY OF PALM DESERT DEPARTMENT OF PUBLIC WORKS
APPROVED BY:
 BO CHEN, P.E. DATE: 6/30/2015
 CITY ENGINEER R.C.E. #4819, EXP. 6/30/2015
REVIEWED AND RECOMMENDED BY: DATE:

PLAN CHECKED BY:
 CIVIL
 TRAFFIC
 LANDSCAPE



CITY OF PALM DESERT
 TENTATIVE TRACT MAP
 TRACT NO. 37242 - LOT 1
 PALM DESERT COUNTRY CLUB
 77-200 CALIFORNIA DRIVE
 PALM DESERT, CA 92211

SHEET 5 OF SHEETS 5
 CITY FILE NUMBER